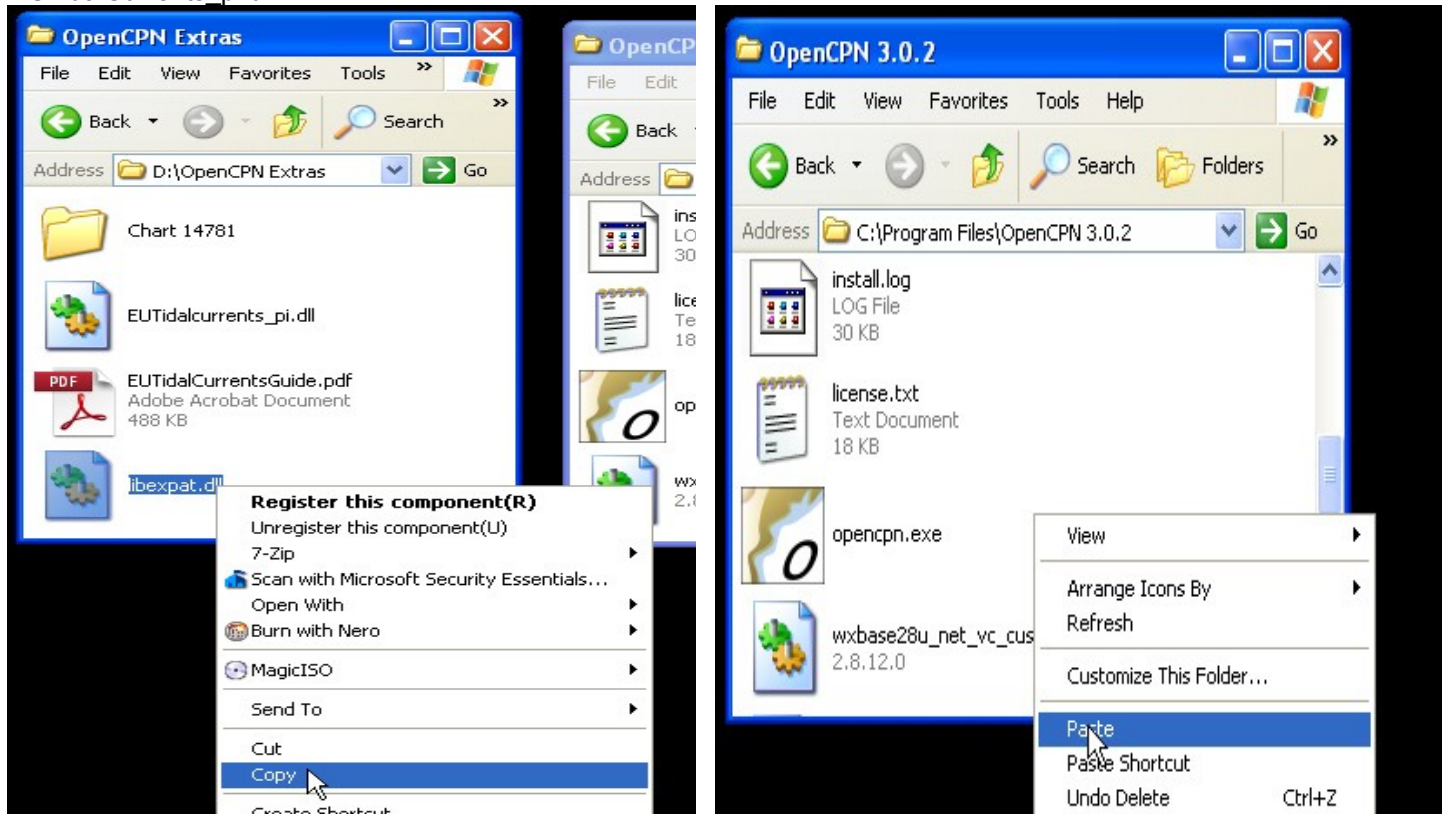


# STEP BY STEP GUIDE TO USING THE OpenCPN EUTIDALCURRENTS PLUGIN

THIS PLUGIN ONLY WORKS WITH COMPUTERS USING THE WINDOWS OPERATING SYSTEM

## Preparing OpenCPN for using the plugin

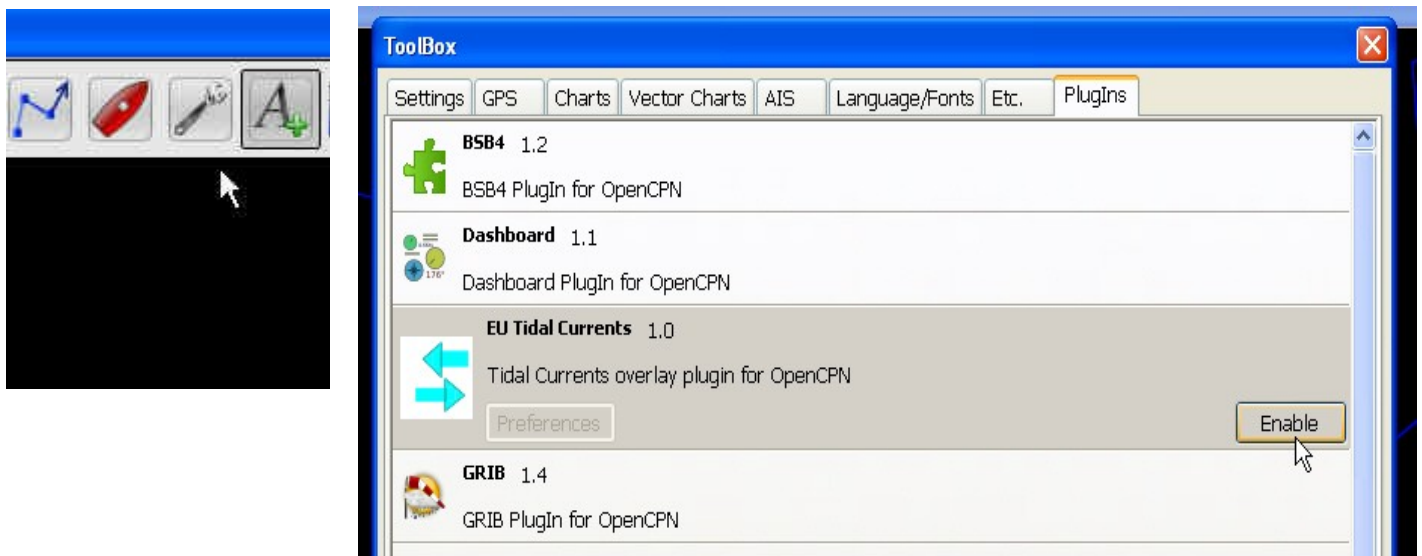
Open the DVD to "Folder View". In the "OpenCPN Extras" folder there are two 'dll' files – 'libexpat.dll' and 'EUTidalCurrents\_pi.dll'.



Copy 'libexpat.dll' to the folder "C:\Program Files\OpenCPN 3.0.2", the main program folder for OpenCPN for most installations. Copy 'EUTidalCurrents\_pi.dll' to the plugins folder of the OpenCPN program. This is usually the folder "C:\Program Files\OpenCPN 3.0.2\plugins".

## Starting the plugin

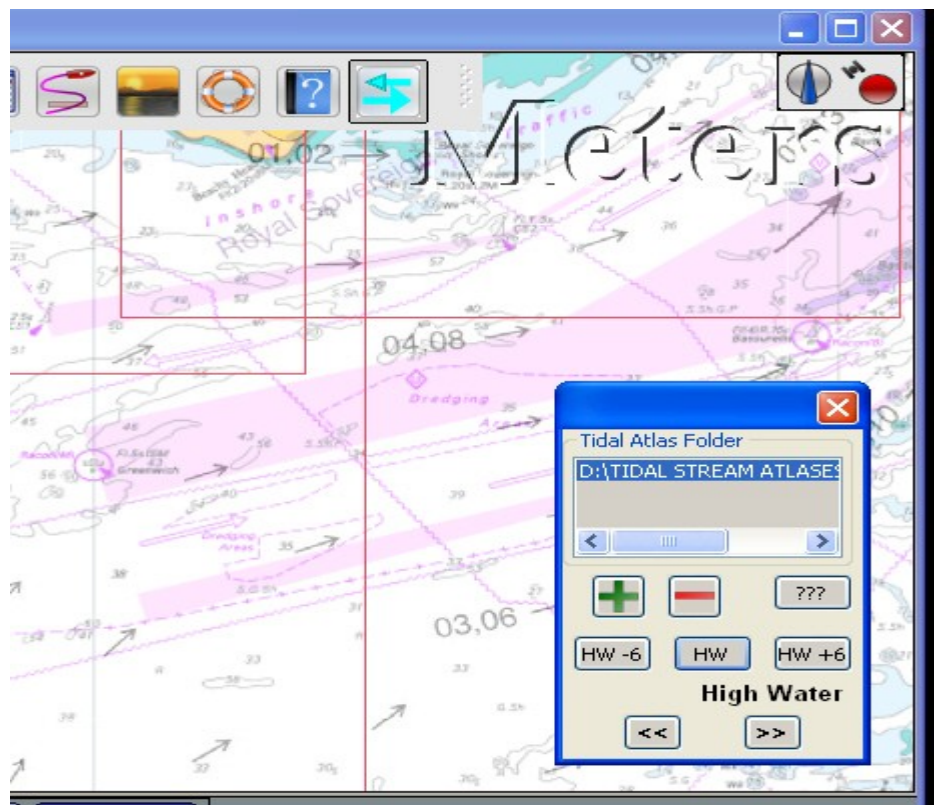
Start OpenCPN. Open the Toolbox and select the plugins page.



Press the Enable button for the plugin. Press OK at the bottom of the Toolbox screen. An icon will appear in the OpenCPN toolbar. Press this button to show the EUTidalCurrents control box.



Pressing the + (plus) button allows selection of the appropriate Tidal Stream Atlas. The folder name and location will appear in the plugin list box. More than one folder can be chosen but only the highlighted Tidal Atlas will be displayed.



Press the HW button to display the tidal currents at 'High Water'.

Using the >> and << buttons it is possible to scroll through the pages of the Tidal Atlas. "High Water" is based on the Standard Port for that Atlas. A list of the Tidal Atlases and the standard port for each Atlas can be seen by pressing the ??? button. A Tidal Atlas can be removed from the list by highlighting the Atlas and pressing the – (minus) button.

Press the EUTidalCurrents plugin button on the toolbar to close the plugin screen (Or use the X). You may need to move the base chart a little to hide the Tidal Atlas chartlet. To disable the plugin go to the plugins page of the Toolbox and press the disable button on the EUTidalCurrents plugin line.

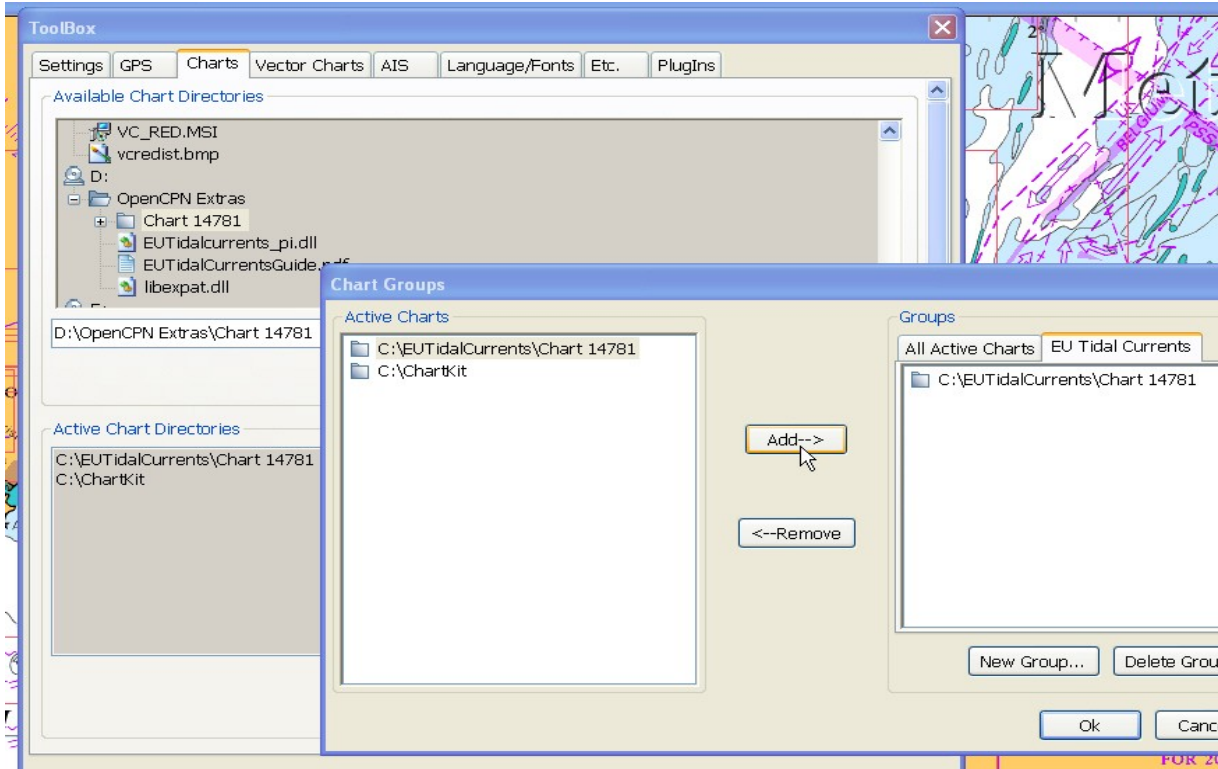
Tidal current arrows may not show as clearly as you would like, against a 'busy' chart background. The next section describes a method of showing the Tidal Atlas chartlet with a minimal amount of background detail.

## Making a chart group for displaying Tidal Atlases using a skeleton chart

In the "OpenCPN Extras" folder is the folder "Chart 14781". This is actually a chart of Lake Champlain, in the USA.

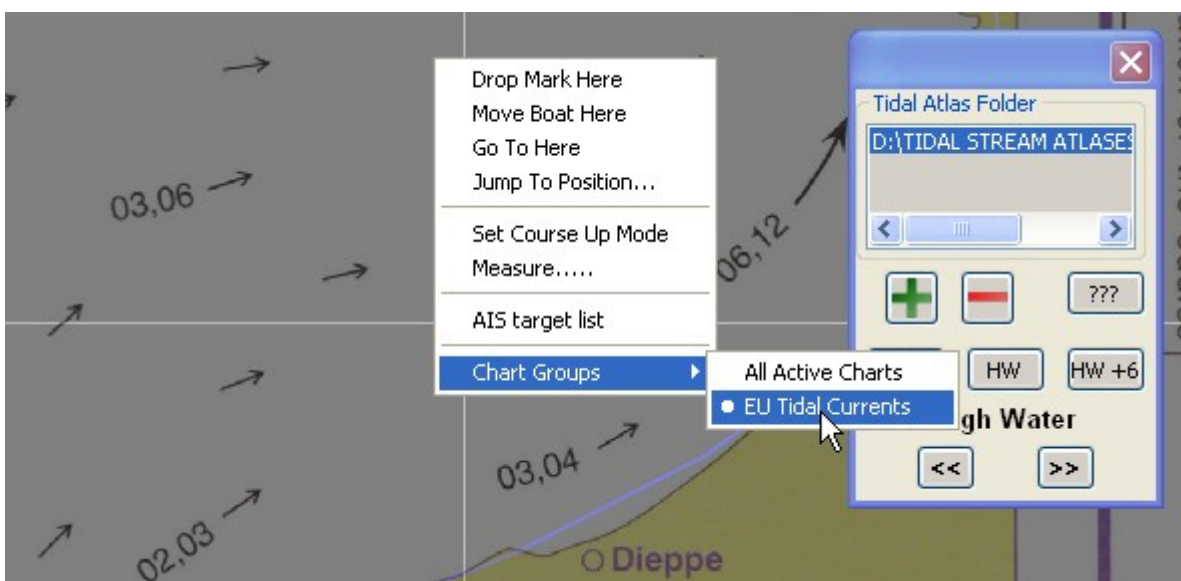
Open the Toolbox. Select the 'Charts' page. Browse until you find the folder 'Chart 14781' and select this folder. Add the selection to the list of chart directories. Tick the boxes for scan charts and rebuild. Press the button 'Chart Groups' and make a new group called 'EU Tidal Currents'.

Highlight the folder 'Chart 14781'. With the EU Tidal Currents page open press the Add button. The folder name will appear on the EU Tidal Currents group page. Press OK to leave this screen. Press OK to leave the Toolbox.



## Using the EU Tidal Currents chart group

Right click on the main screen of OpenCPN. Chart groups is at the bottom of the list. Select 'EUTidal Currents'. The background will change to show only the Tidal Atlas chartlet.



All the routes you have set up with OpenCPN, AIS information, Waypoints etc will still appear as usual on the screen. To return to the normal chart display right mouse click and select 'All Active Charts' or any other chart group that you have made.

## **KNOWN PROBLEM**

When zoomed in closely to an area of the main chart and a Tidal Atlas is selected and viewed the OpenCPN program may crash. If zoomed in close it is best to move to a smaller scale before viewing a tidal chartlet.

## **A WORK IN PROGRESS**

This is the first time that a digital Tidal Atlas has been available in this form. We welcome your suggestions for improving the plugin.

VMH 2012-10-018